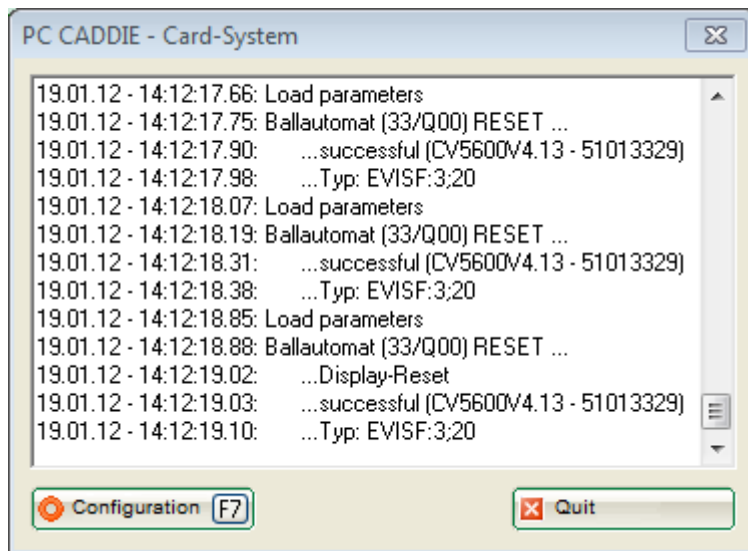


Start the server

You can access this function under **Setup/Card-System/Launch System-Server**. You can use this for starting the card server from any workstation; however, it runs normally as a service on the server.



Not everybody can simply press the menu button and start the server, you need a special PC Caddie employees account for doing this.



Please note that the card server should be started only once. Use the sm macro to check if the card server appears as an active service in the Service manager. The following message appears if a PC CADDIE.id card server is already running in your network:

