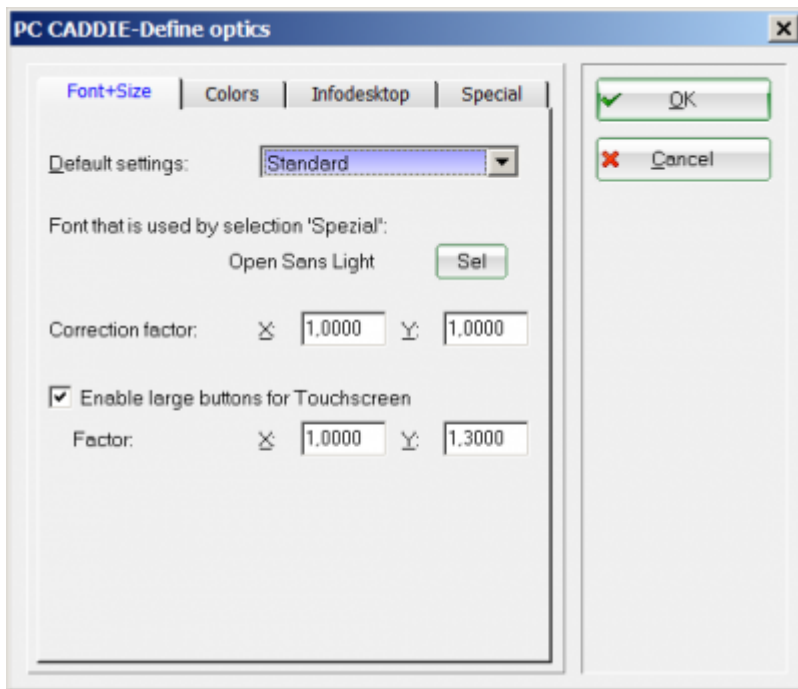


Configuration of the PC CADDIE interface

Under **Settings/Programme settings/Configuration of the PC CADDIE interface** you can customise the appearance of the PC CADDIE programme locally and individually.

Font+Size

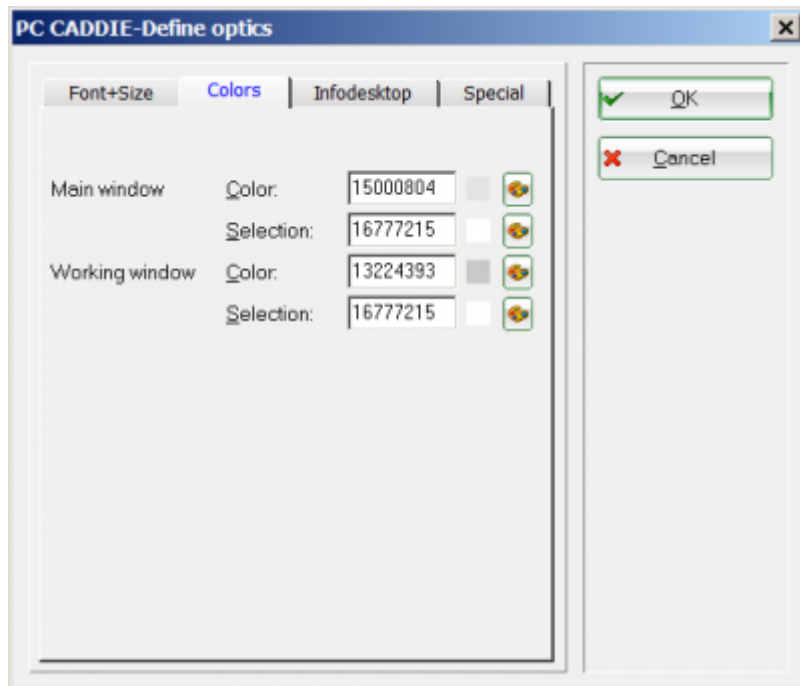
In the first tab, you can configure the font and button size:



TIP: The font size is configured via **Basic setting** is set. Especially for POS computers with touch screens, the tick **Enlarged buttons for touchscreens** is recommended. Confirm with **OK**.

Colours

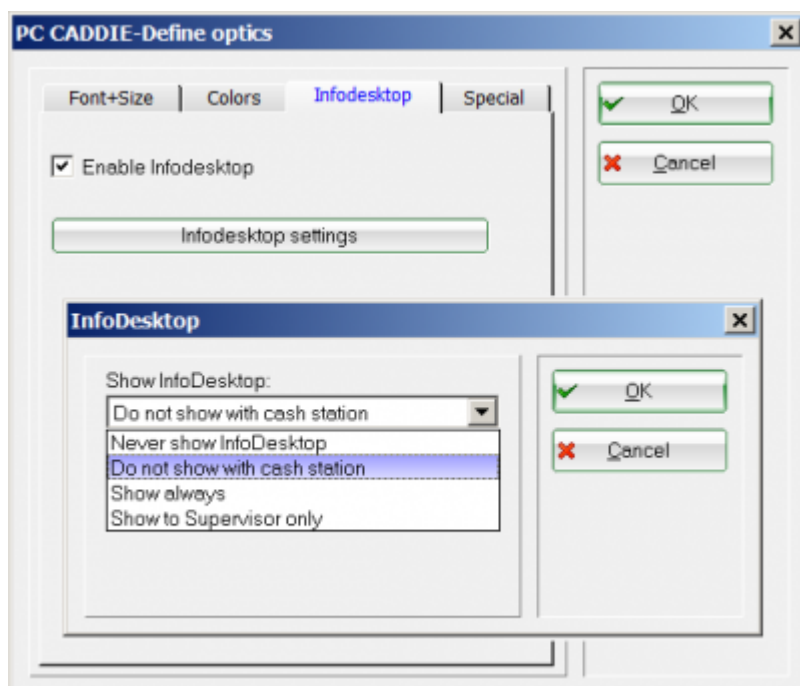
Here you can individually set the colours for your PC CADDIE. We recommend using colours that are easy on your eyes. Confirm your changes with **OK**.



Infodesktop

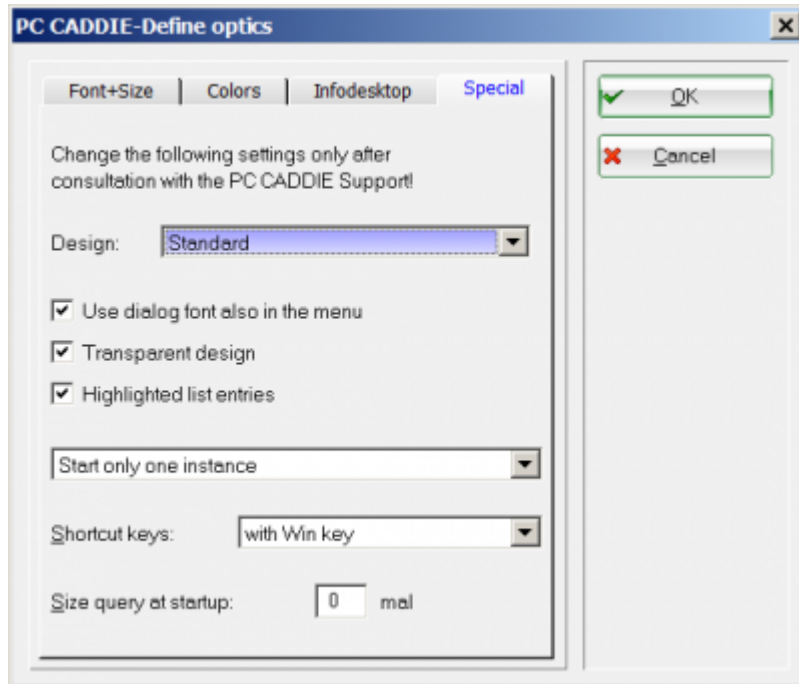
The [PC CADDIE Infodesktop](#) can be activated by ticking the option *Activate Infodesktop* and confirm with **OK**.

Infodesktop is deactivated by default for pay stations. If you are the supervisor for your PC CADDIE programme, you can define the Infodesktop settings here: [Password management](#) The user stored as supervisor can choose between the following settings:



Special

Please only change these settings in consultation with PC CADDIE Support!



Restart PC CADDIE to apply all optics changes completely.

Change design

With the 2022a annual update, all PCCADDIE installations will be converted to the „Modern“ design. You can change this back to „Colourful“ for each workstation.

Interface-Einstellungen



Spezial

Design+Größe Farben Hintergrund Infodesktop

Design:

Modern

2/2



Größe:

Farbenfroh

Modern



Fette Schrift verwenden



Schmale Listbox-Einträge

Korrektur-Faktor:

X:

1,0000

Y:

1,0000



Vergrößerte Buttons für Touchscreen

Faktor:

X:

1,0000

Y:

1,3000



DPI Awareness aktivieren (Modern-Design)

Status:

Active (96 DPI)

✓ OK

✗ Abbruch