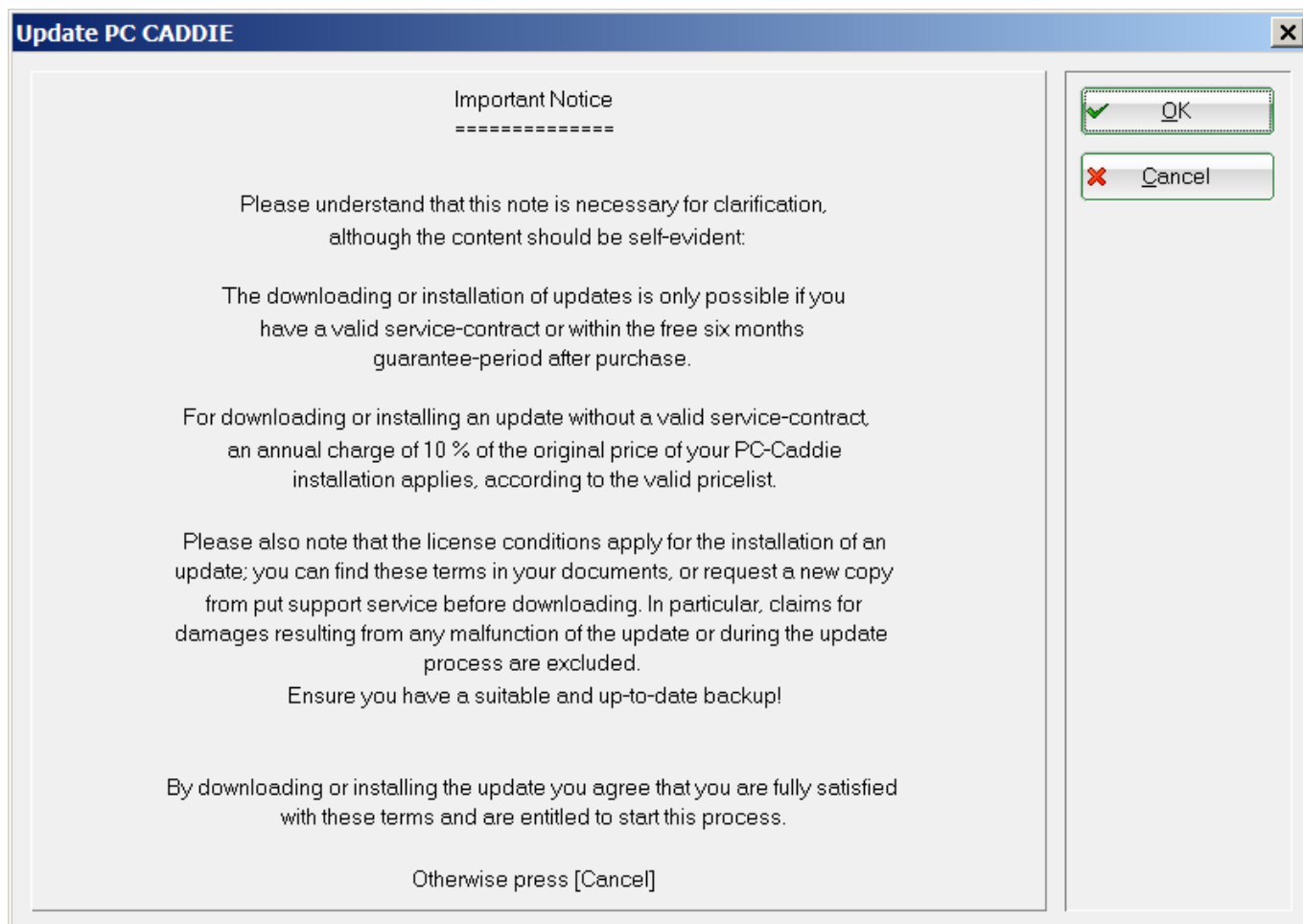


# PC CADDIE update

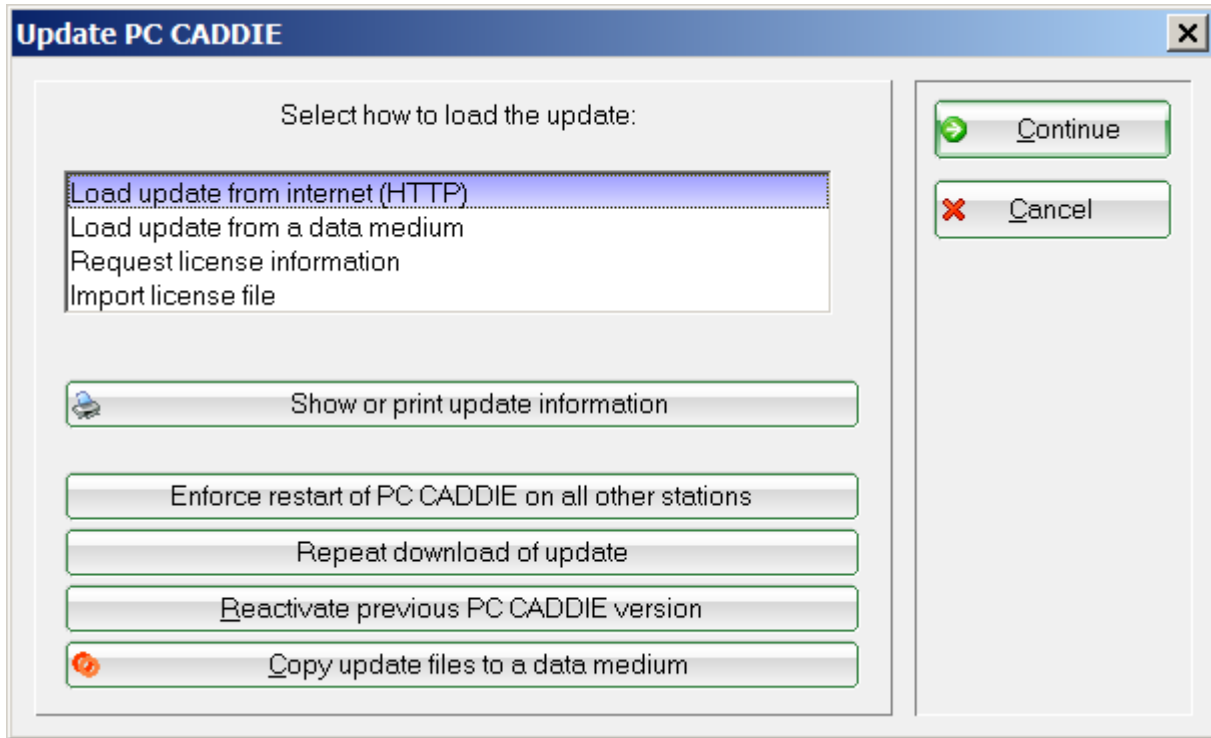


Updating PC CADDIE is very important for the proper functioning of the system. You should regularly check for new updates.

Start the update process from the menu **Exit/Update PC CADDIE**. The following message window opens; press **OK** to confirm:



Carefully review the settings from the next window and confirm with **Continue**. You should usually not change the proposed selections:

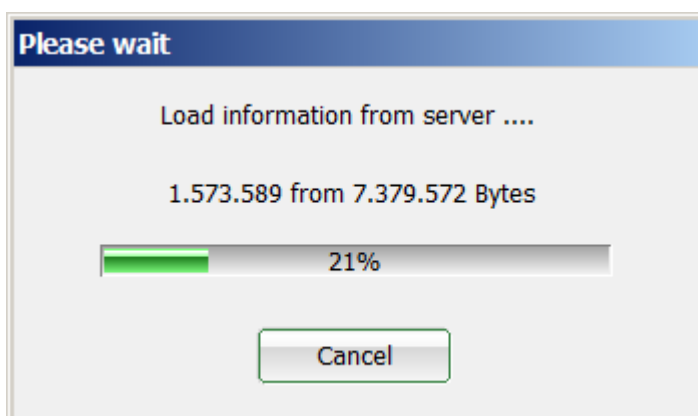


If your system is already up to date, the following window opens:

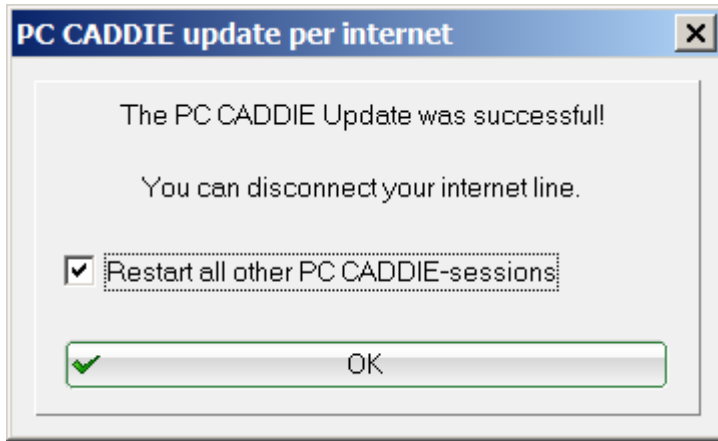


Press **Cancel** to close the window.

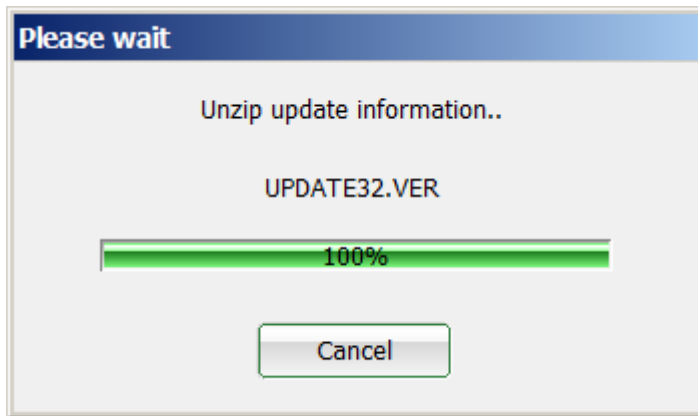
However, PC CADDIE automatically begins downloading the update if a newer version is available:



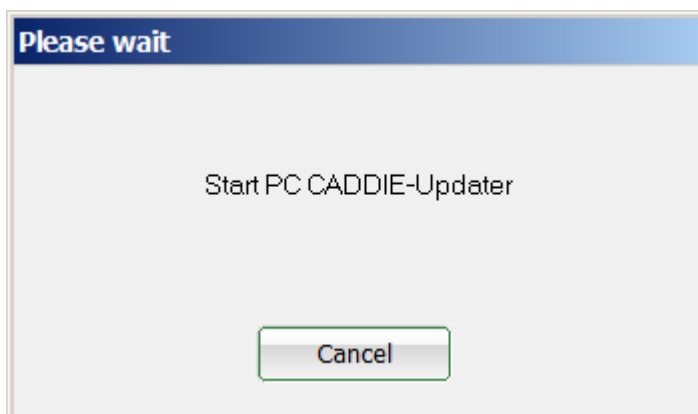
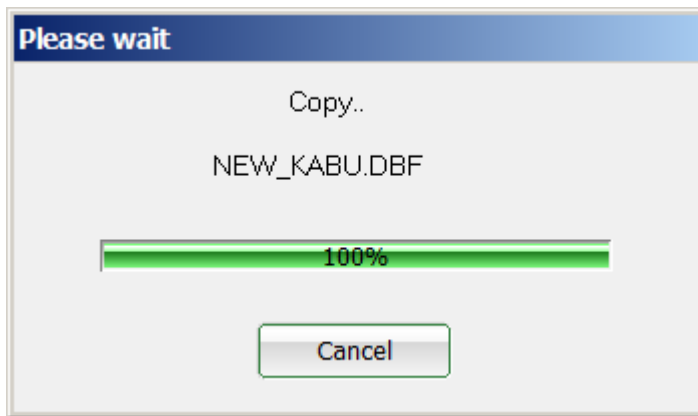
The following window opens once the download is completed; confirm with **OK** and PC CADDIE will automatically start the update:



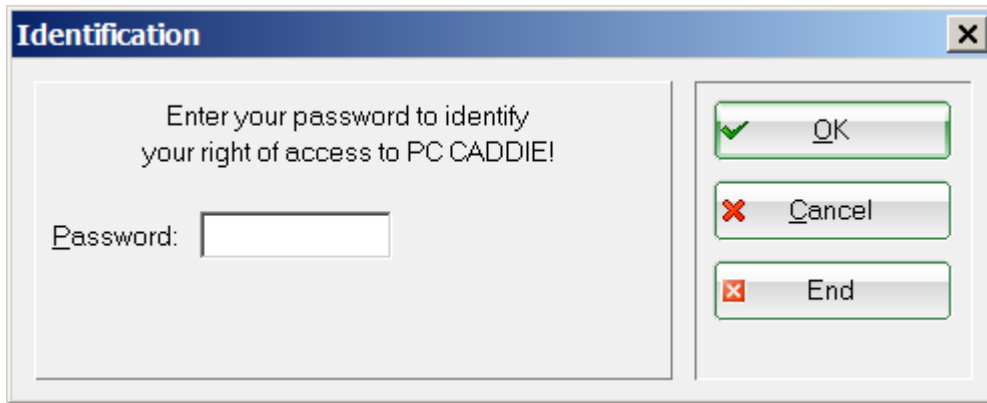
You will then see the following window: PC CADDIE unpacks the newly downloaded files.



Confirm with **OK** and PC CADDIE will automatically update and then restart using an installation routine:



A successful update is followed by the Initial identification window which allows you to log-in again to the system.



The image shows a software dialog box titled "Identification" with a close button (X) in the top right corner. The dialog is divided into two main sections. The left section contains the text "Enter your password to identify your right of access to PC CADDIE!" followed by a label "Password:" and an empty text input field. The right section contains three buttons stacked vertically: "OK" with a green checkmark icon, "Cancel" with a red X icon, and "End" with a red X icon.