

# Advantage Database Server

## Basics

The Advantage Database Server (hereinafter ADS) from Sybase is required by PC CADDIE to manage the databases. It regulates exclusive access to the databases, taking into account all file attributes and authorisations (read, write and delete rights).

The ADS server prevents data corruption, i.e. a data record being processed by two parties. This ensures greater stability and, if necessary, better performance.

There are two variants of ADS:

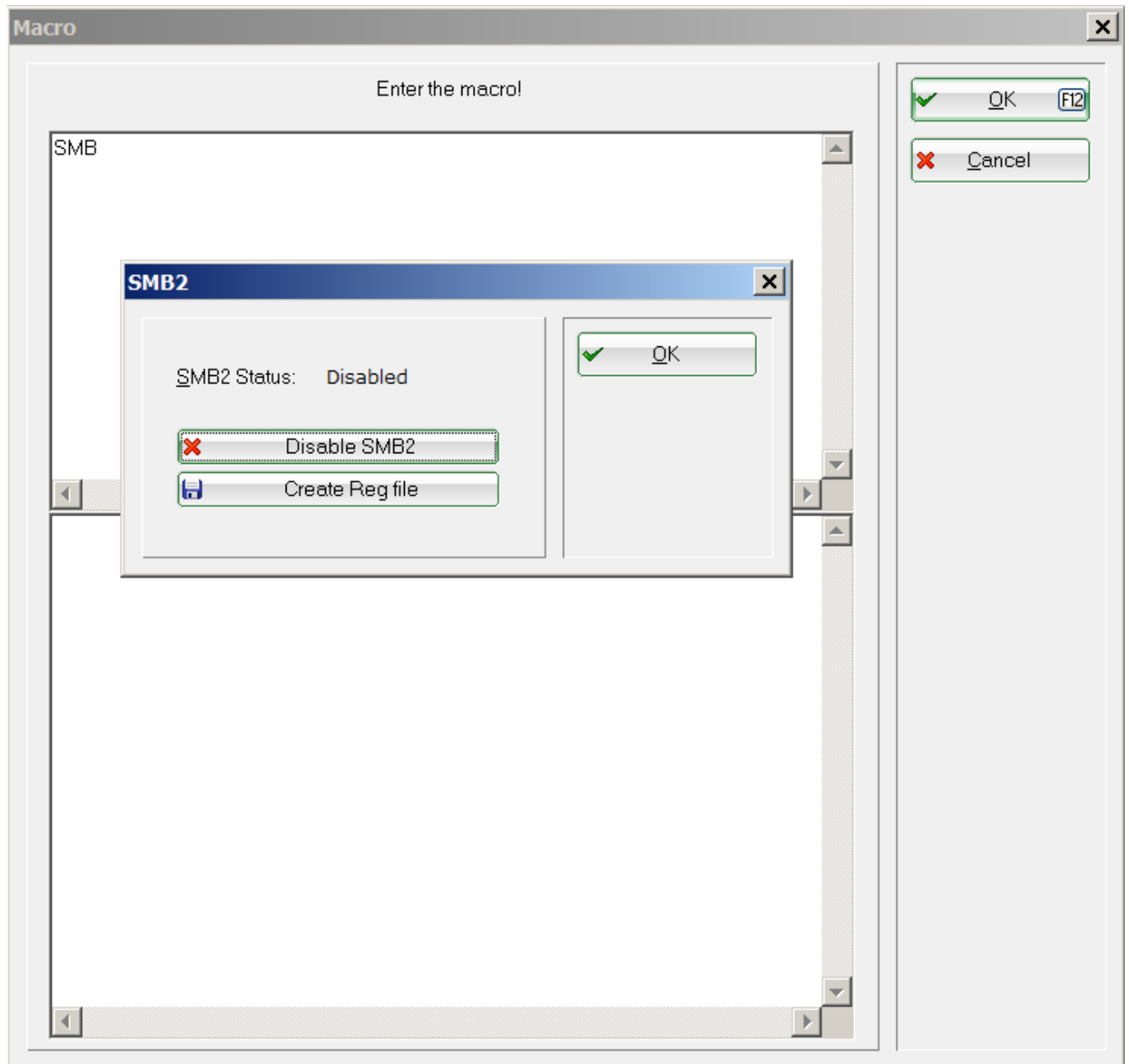
- LOCAL SERVER - free of charge as a DLL (ADSLOC32.DLL). For single workstation solutions or in small networks with a maximum of 5 workstations. Working with PC CADDIE via remote desktop connection is not possible with the ADS Local Server.
- REMOTE SERVER - available for a fee as a client/server database management system. Required for larger networks (more than five workstations) or RDP access (terminal server). The ADS Remote Server can also be useful in smaller networks. Advantages include faster access. The server-based transaction processing also avoids any database corruptions (e.g. in the event of a client „crash“ or network interruptions).

ADS licences are staggered according to the number of users.

The ADS can be used on both 32 and 64 bit versions (Windows).

## Installation

- The LOCAL SERVER (ADSLOC32.DLL) is installed automatically with PC CADDIE.
- In local server mode, please note that with Windows Vista/7, Windows Server 2008 and Windows Server 2008 R2, the SMB2 protocol (Server Message Block) must be deactivated or repaired, as it has been proven to damage the PC CADDIE index files. Further information on request.



- The installation of the ADS-REMOTE-SERVER must be carried out separately. The licence key (serial) and the validation code must be available for this. You will receive this data from PC CADDIE support after placing your order.
- The ADS must be installed on the PC CADDIE file server, i.e. on the computer (server) on which the PC CADDIE databases are located.
- Administrator rights are required for installation.
- From a Windows 2003 server, either the „Data Execution Prevention“ (DEP) in Windows should be deactivated or you should add the *ads.exe* from the ADS programme directory as an exception.

The installation is started via the ADS macro. The menu item **Configuration of the ADS server** menu item automatically loads the current ADS versions recommended for PC CADDIE.

ADS-Konfiguration

Datenbank-Treiber:

ADS Remote Server

DLL Version:

ADS 12.0

Local:

P:\PCCADDIE\USER\_1\ (ADS)

Remote:

P:\PCCADDIE\ (ADS)

Status:

LOCAL SERVER

DLL:

7.10 (Advantage 32-bit Client Engine for Windows)

OK

Abbruch

Grundeinstellungen

Spezielle Anpassungen

☒ Verbindungs-Versuche wiederholen

☐ Kompression des Datenverkehrs

☒ Prüfung der individuellen Zugriffsrechte

☒ Proprietäres ADS-Locking aktivieren

Advantage-Management-Utility

F2

Konfiguration des ADS-Servers

F3

Lizenzkey und Zeichensatz des Servers

F4

Pfadeinstellungen bearbeiten

F6

Konfigurations-Datei ADS.INI

F7

Konfigurations-Datei ADSLOCAL.CFG

F8

Select the ADS version that matches your operating system (32/64 bit). For a 64-bit installation, you will be asked to confirm a registration file:

Installationshinweis

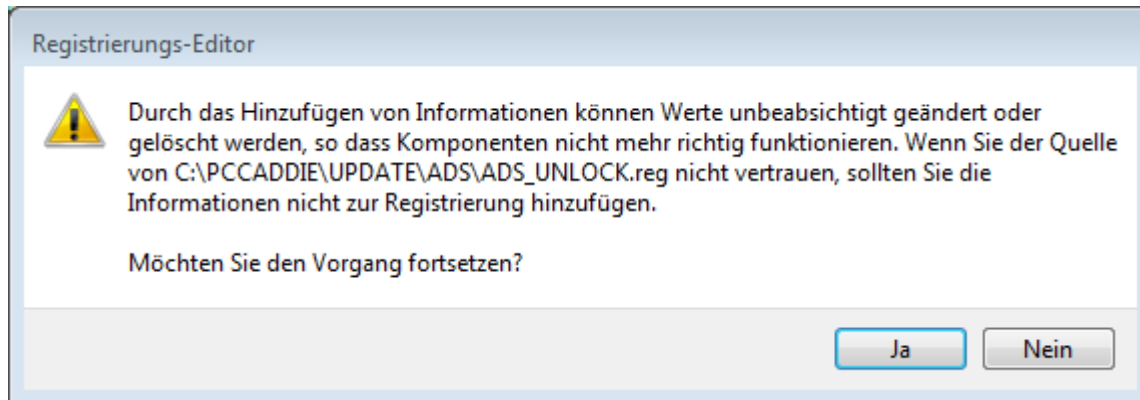
Sie werden im Laufe der Installation dazu aufgefordert, die Datei ADS\_UNLOCK.REG der Registrierung hinzuzufügen. Bitte bestätigen Sie dies mit JA

Starten

Abbruch

[www.pccaddie.com](http://www.pccaddie.com)

gedruckt am: 2025/06/21 21:48  
3 von 13



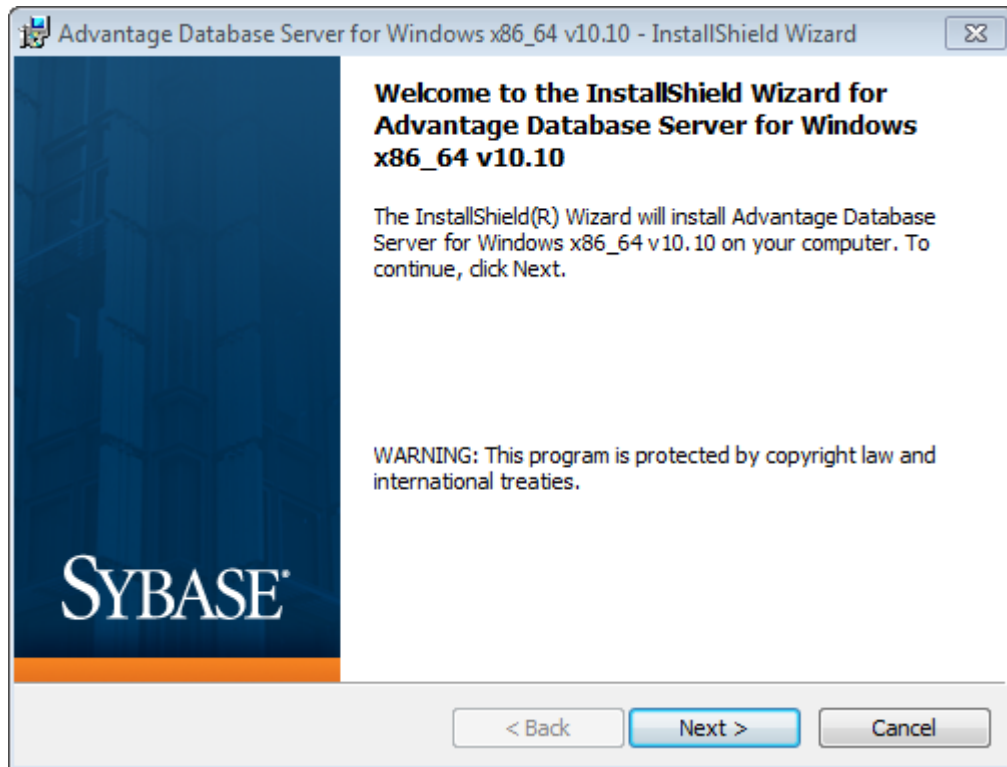
About the macro **ADS** macro can be used to change the configuration. This may be necessary, for example, if the ADS server is no longer accessible. In this case, you would no longer be able to work with PC CADDIE. If you now change the setting back to ADS Local Server, you have the option of working on 5 workstations.

In the next step, the desired version is requested and the ADS installation programme is started.

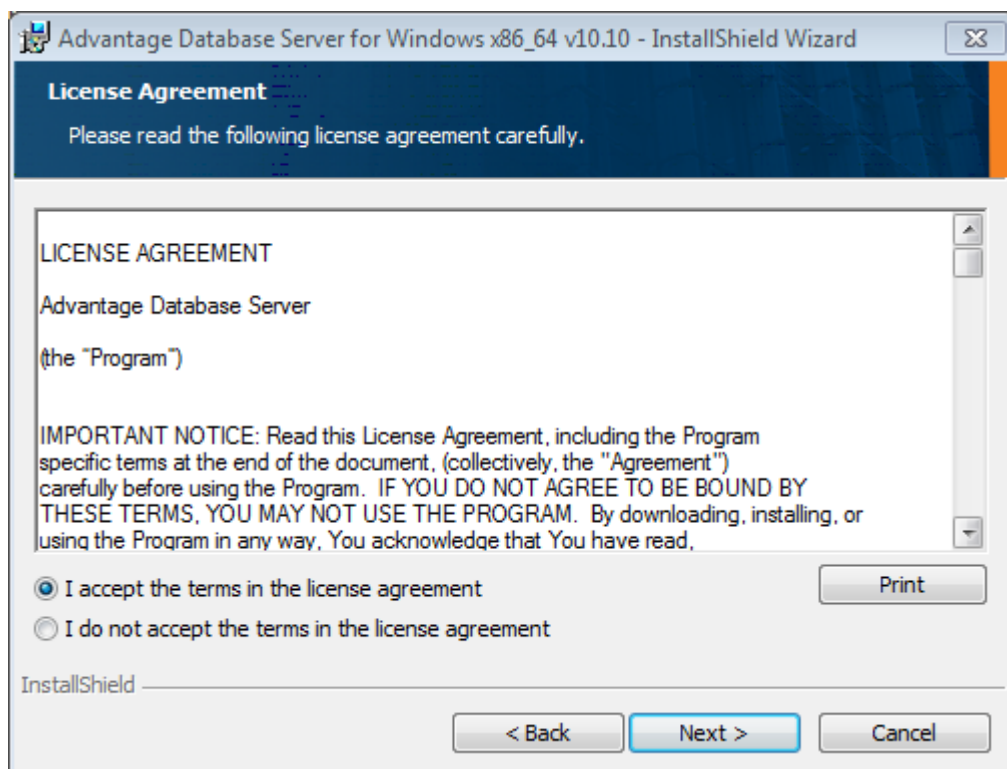


When installing an existing ADS, the ADS version licensed for the customer must be installed. Newer versions require a new licence.

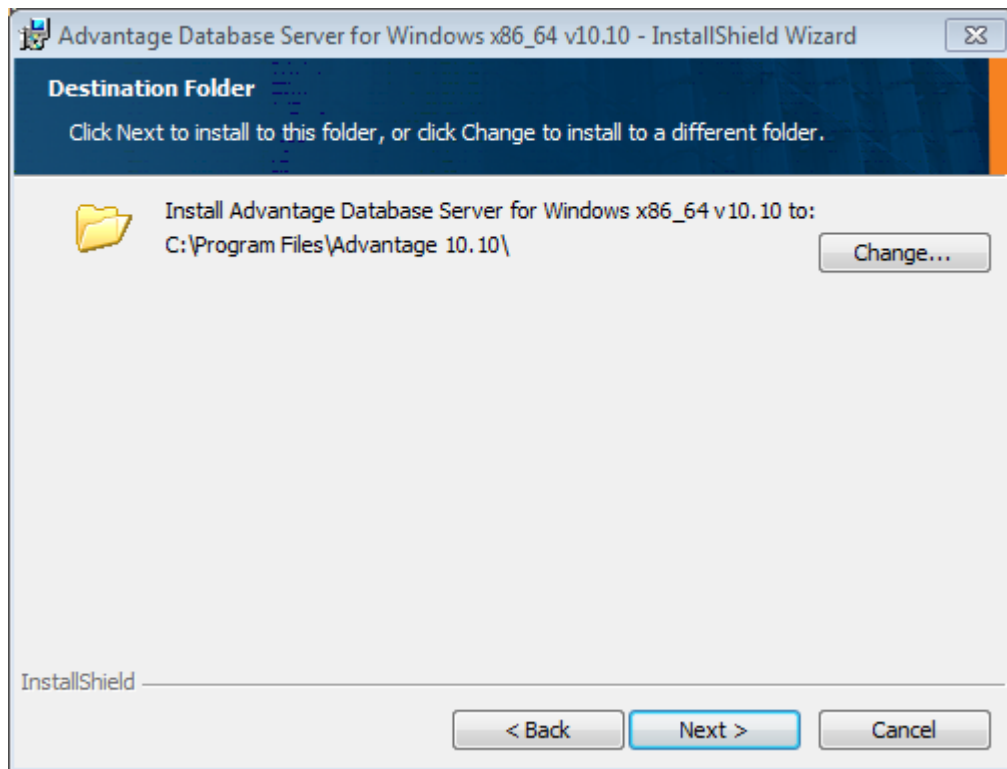
The installation routine starts:



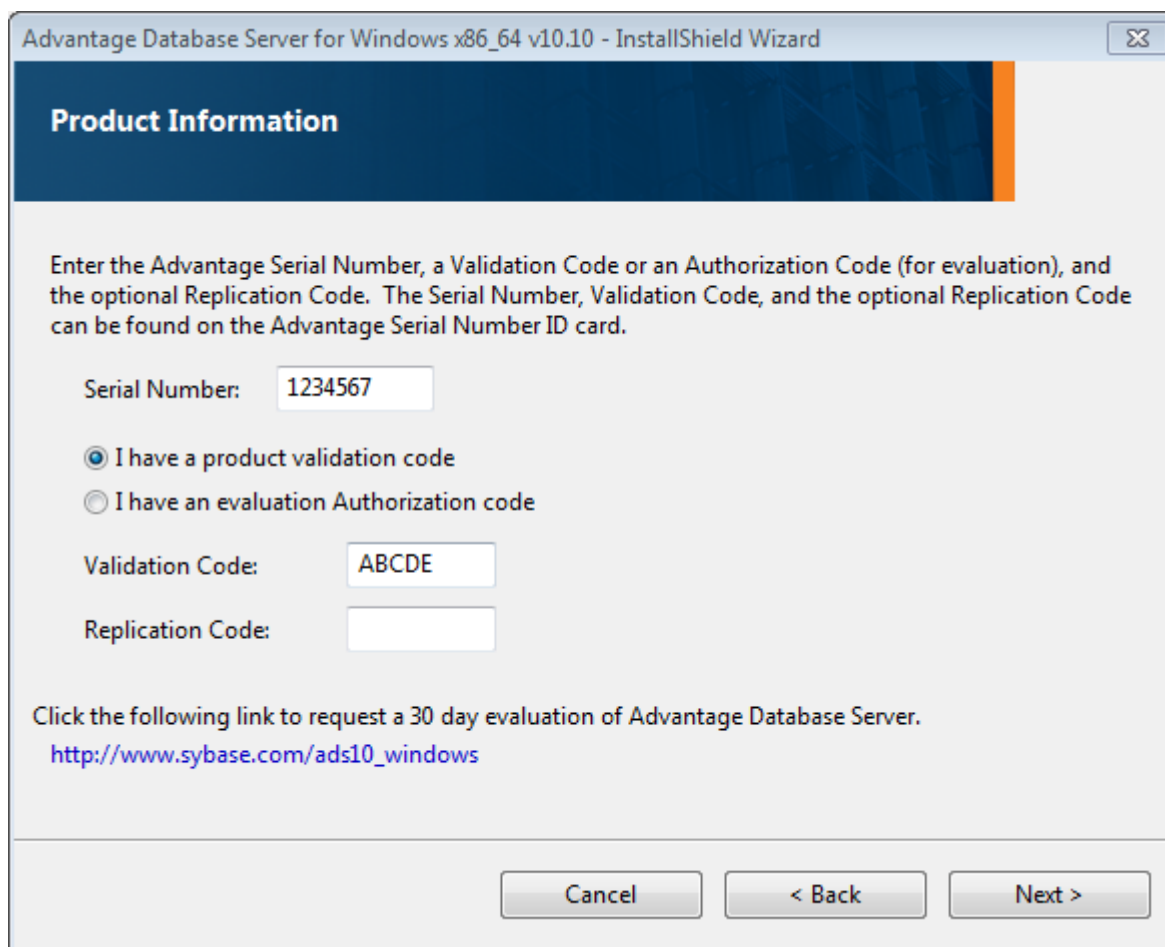
Confirm the Sybase licence conditions:



Specify the installation path for the ADS here:



Enter the serial number and the validation code here:



Select Automatic Startup if you want to start the ADS as a system service (recommended):

Advantage Database Server for Windows x86\_64 v10.10 - InstallShield Wizard

## Product Owner

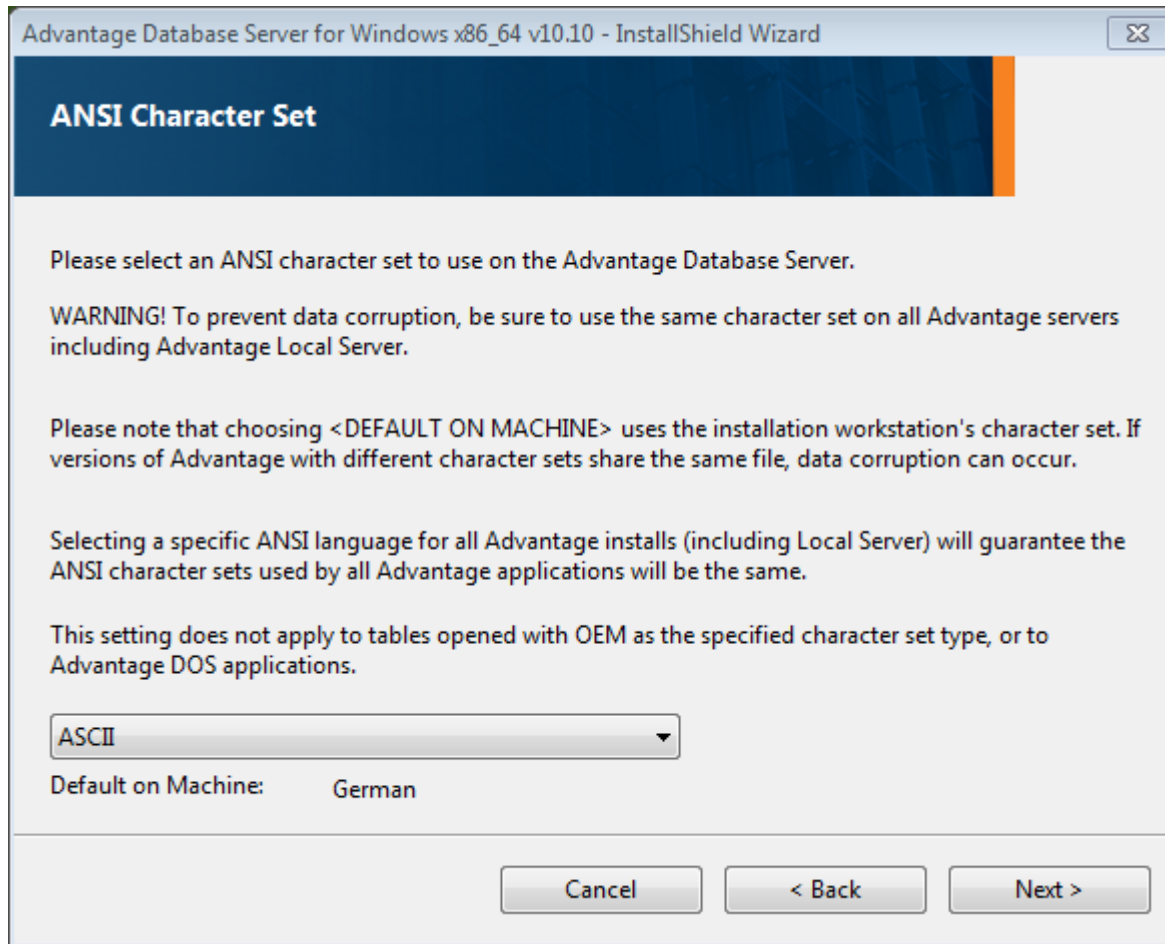
Enter the name of the Registered Owner of the Advantage Database Server.

Registered Owner:

Automatic services start every time the system starts. Manual services can be started by a user once logged in.

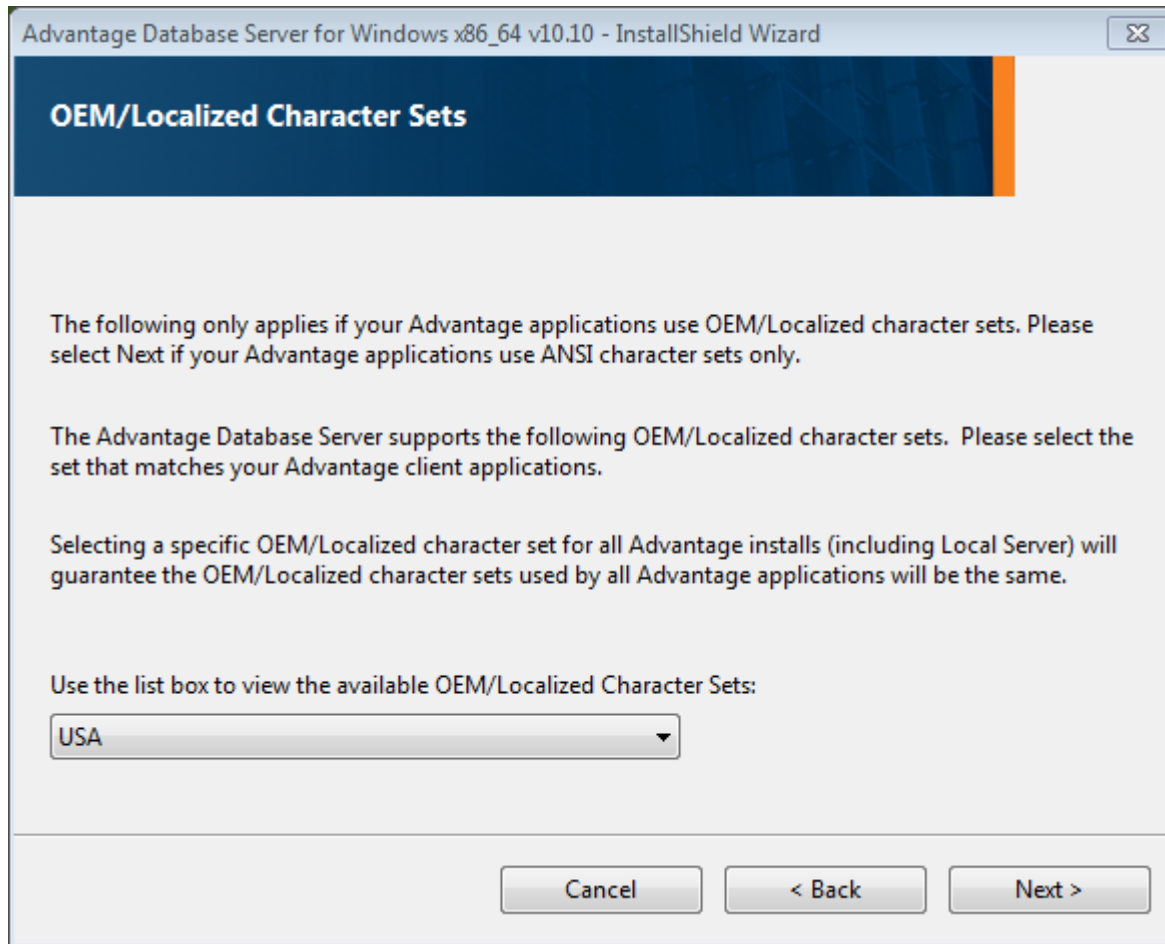
☒ Automatic Startup ☐ Manual Startup

Please select the character set ASCII:

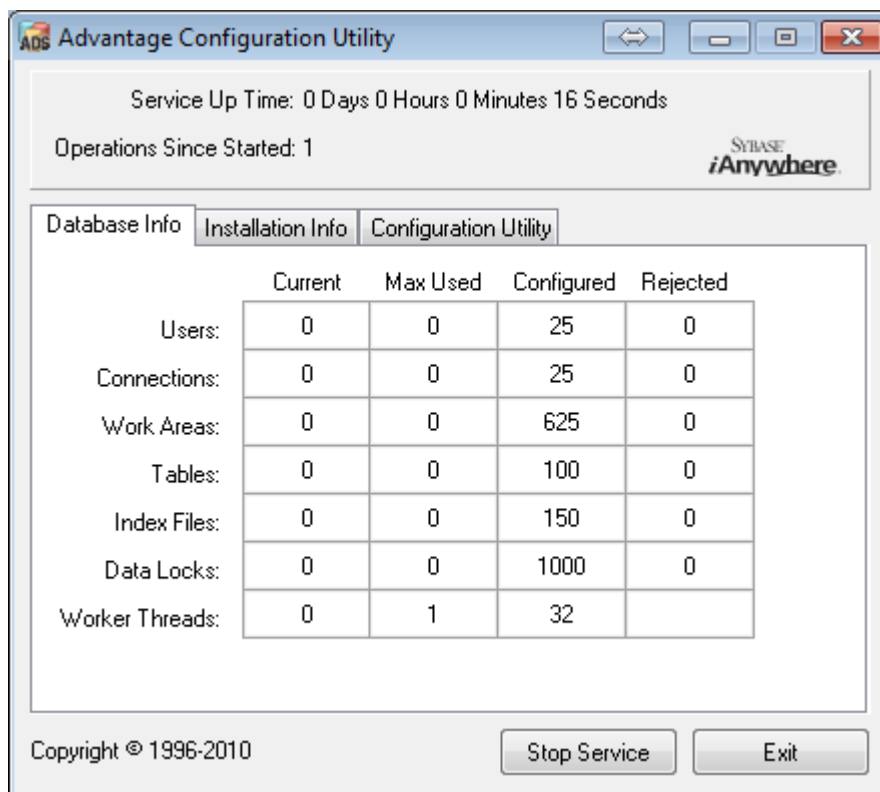


Select the USA as the local character set:

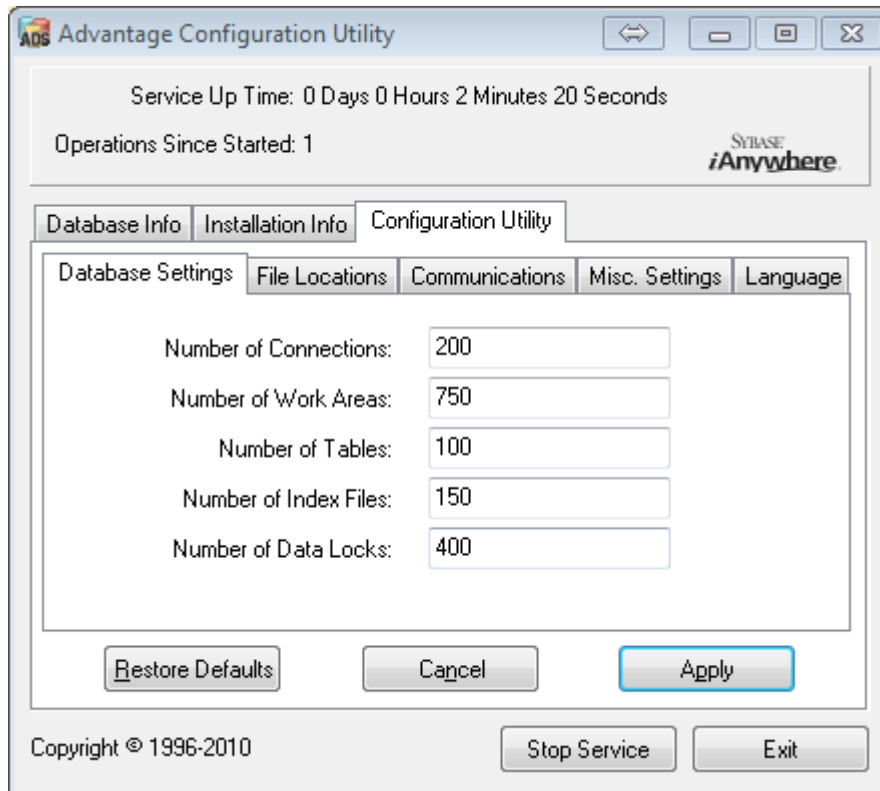




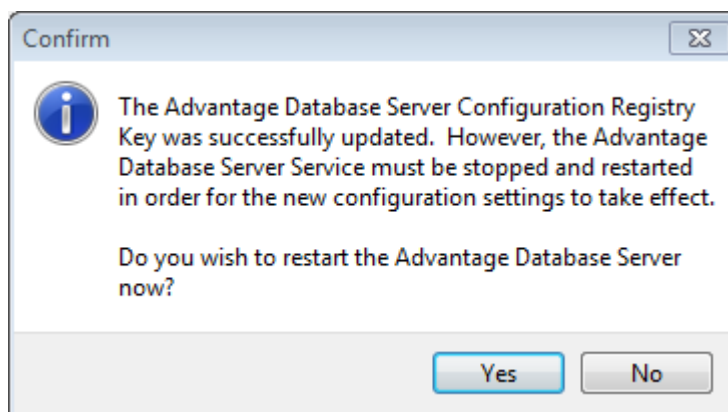
The installation is largely completed with the following window.



You must now select the **Configuration Utility** the **Database Settings** tab as follows:



Confirm here with **Apply**. The following window must be opened with **Yes** must be confirmed.



TIP Keep the enclosed „README“ file open, the specific settings are stored there.

## Configuration in PC CADDIE



In PC CADDIE, the ADS can always be called up with the macro of the same name.

### Basic settings

To set up the REMOTE-SERVER, the database driver must be changed to „ADS-REMOTE-SERVER“. PC CADDIE makes the necessary settings automatically. These only need to be changed in exceptional cases. Please contact your system administrator or PC CADDIE support for this.



Enter the server name, server IP and port here so that the ADS can be found more quickly by PC CADDIE.



For a terminal server installation, it is important that the local (!), virtual drive letter, which is created by the batch using the SUBST command, is entered in the ADS configuration. **Always with DBFNTX** in the ADS configuration. This is necessary because the local PC CADDIE program directory is started from there and certain, few functions also work there via the database driver (ADS) - however, this would not be found as the SYSTEM account cannot recognise user-related drives.

## Customisation for multiple network cards

If several network cards are activated in the server, it is important to bind the ADS server to one of the IP addresses. This is done via a registry entry as follows:

HKEY\_LOCAL\_MACHINE\SYSTEM\CurrentControlSet\Services\Advantage\Configuration

A new key with the designation LAN\_IP\_ADDRESS must be created here, in which the IP address to which the server is to be bound is then stored.

Name	Typ	Daten
(Standard)	REG_SZ	(Wert nicht festgelegt)
ADVANTAGE_ALREADY_RUNNING	REG_DWORD	0x00000000 (0)
ALLOW_IPC_CONNECTIONS	REG_DWORD	0x00000001 (1)
CLIENT_TIMEOUT	REG_DWORD	0x00000078 (120)
COMPRESSION	REG_SZ	Internet
CONNECTIONS	REG_DWORD	0x000000c8 (200)
DBFS	REG_DWORD	0x00000064 (100)
DISABLE_FREE_CONNECTIONS	REG_DWORD	0x00000000 (0)
ERROR_ASSERT_LOGS	REG_SZ	C:\
ERROR_LOG_MAX	REG_DWORD	0x000003e8 (1000)
FLUSH_FREQUENCY	REG_DWORD	0x000027c0 (600000)
INDEXES	REG_DWORD	0x00000096 (150)
INTERNET_PORT	REG_DWORD	0x00000000 (0)
LAN_IP_ADDRESS	REG_SZ	192.168.0.2
LOCKS	REG_DWORD	0x00000114 (260)
NONEXCLUSIVE_PROPRIETARY_LOCKING	REG_DWORD	0x00000001 (1)
PACKETS	REG_DWORD	0x00000070 (112)
RECEIVE_P_PORT	REG_DWORD	0x00001876 (6262)
SEMAPHORE	REG_SZ	
SOFT_BUFFER	REG_DWORD	0x00002000 (8192)
STAT_DUMP	REG_DWORD	0x00000000 (0)
SUPPRESS_MESSAGE_BOXES	REG_DWORD	0x00000000 (0)
THREADS	REG_DWORD	0x00000000 (0)
TPS_LIST_ELEMS	REG_DWORD	0x00000063 (99)
TPS_LOGS	REG_SZ	C:\
USE_SEMAPHORE_FILES	REG_DWORD	0x00000000 (0)
USER_BUFFER	REG_DWORD	0x00000276 (534)
WORKAREAS	REG_DWORD	0x000002ee (750)