

Import tournament

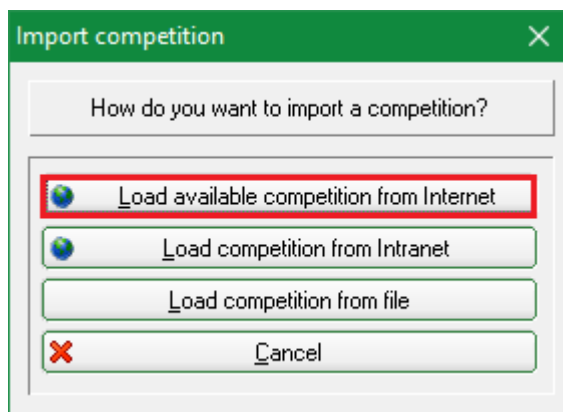
In preparation for an import, a tournament must first be [tournament must first be exported](#).

Import from PC CADDIE Server

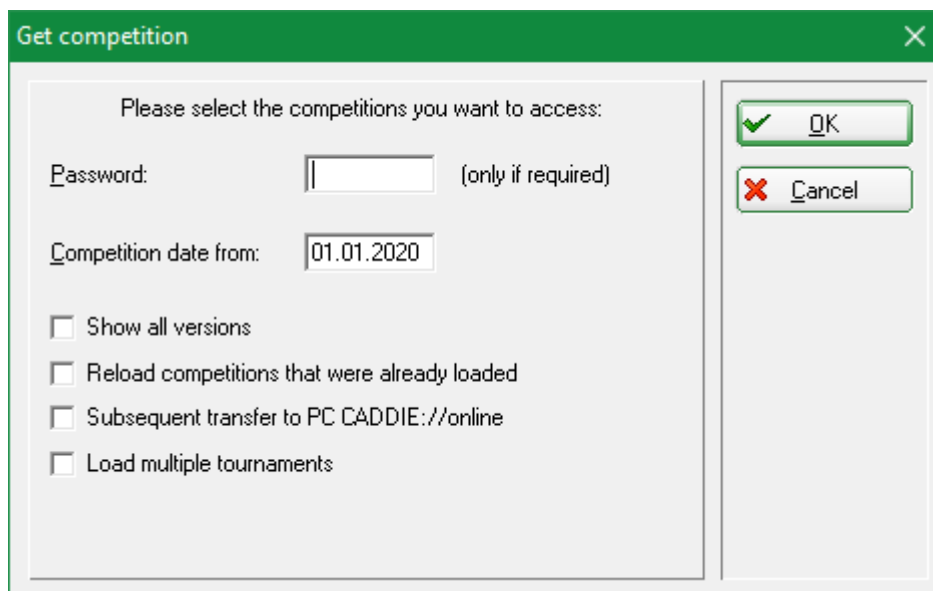


For this, the exporting and importing parties need PC CADDIE.

As soon as you know that another PC CADDIE club has exported a tournament to the PC CADDIE server for you, you can import the tournament. To do this, select **Tournaments/Import tournament** and continue **Load tournament shared on the Internet**.



On the next screen, just click on **OK**. You do not need a password.



You will now receive an overview of all tournaments that have been authorised for you.

Select the Competition: ✕

Name	Date	Changes	ID
Sempach - 4. CLUB GOLF Tournament Week - 4. Tag (Sempach Lakeside)	25.07.19	18.03.2020 20:10 0410103	328493
Steffis QeSC Wartemodus (Mainzer Golfclub 1-18 (07.12.2017))	17.02.20	17.02.2020 13:59 0495537	434756
Turnier zum Laden (AB - 1-18 Haus Kambach)	29.03.20	25.03.2020 18:46 0499059	215801
Jugenderöffnung 2020 (1-9)	04.04.20	28.02.2020 13:16 0492202	436562
Senioren Meisterschaft 1. Tag - (Küssnacht 1-18)	15.07.20	13.03.2020 15:00 0410054	437795
Viererclubmeisterschaften (Elkofen, GC Schloss - 1-18)	25.07.20	25.02.2020 17:37 0498831	436316

☒ OK
☐ Cancel

For most users, the list here will show a slightly smaller number of released tournaments, but you can easily recognise which tournament is currently available for you even if the number is larger. Note the „yellow colour“, the tournament date, the date and time of the export and you will quickly see which tournament you want to import. Select the tournament and click on **OK**.

Since summer 2015, there has been another query concerning the course data. It is an advantage if you read in course data for other courses completely, but can decide, for example, in a multi-round tournament in which your own course also appears, that it is better to leave your own course data as it is and edit it yourself if necessary.

Competition import ✕

Decide whether you also want to import the location data contained in this tournament data.

The transfer time between holes is also included in the course data.

☒ Load other clubs' course data, if available ←

☐ Also overwrite this club's course data (ATTENTION-usually NOT)

☐ Cancel

The tournament is then read in and you will find it in your tournament list.



If your own course is entered in the imported tournament, please re-enter it once in the tournament (as you are not importing your own course)! This is the only way to be sure of your course data! This also applies to your place in a single round in multi-round tournaments!

If the tournament already exists in your tournament list, it will not be overwritten. The last status is highlighted in grey in the list and can be used as an archive so that you can look it up at any time.

Competition Datas - Select competition

Enter search-abbr.

Date	Tournament	Hole	Competition	Player	Abbr
04.07.17	Tournament name	54	Single-Sta	0/0	17004
25.11.17	Club championship	36	Single-Sta	5/0	17005
27.04.18	18002	18	Single-Sta	0/0	18002
27.04.18	Opening tournament	18	Single-Sta	1/0	18001
20.07.18	18003	18	Single-Sta	0/0	18003
09.08.18	18004	18	Single-Sta	0/0	18004
13.08.18	2 x 27 holes for 2 days	72	Single-Sta	0/0	18005
26.09.18	18007	18	Single-Sta	0/0	18007
10.10.18	Basic Tournament	18	Single-Sta	1/0	18006
15.11.18	Championship Nov 2018	18	Single-Sta	2/0	18008
26.11.18	18009	18	Single-Sta	0/0	18009
31.01.19	Test Comp	18	Single-Sta	0/0	19001
07.02.19	Test Comp start Tee1&10	18	Single-Sta	0/0	19002
24.05.19	19003	18	Scrambl-Sta	1/0	19003
31.05.19	test	18	Single-Sta	-1/0	19004
30.01.20	PC CADDIE Cup powered by us	18	Single-Sta	1/0	16008
17.02.20	Steffis QeSC Wartemodus	9	Single-Sta	0/50	20003
17.02.20	Steffis QeSC Wartemodus	18	Single-Sta	0/0	20005
25.03.20	PC CADDIE Cup	36	Single-Sta	9/0	20004

Buttons: OK, New (F9), Edit (F7), Delete (F5), Find, Continue (F3), Cancel

Import from the intranet

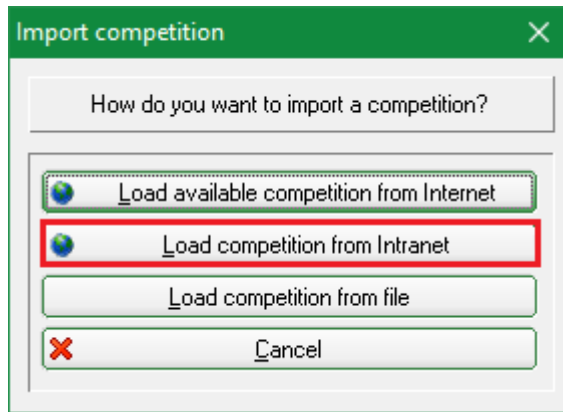


or

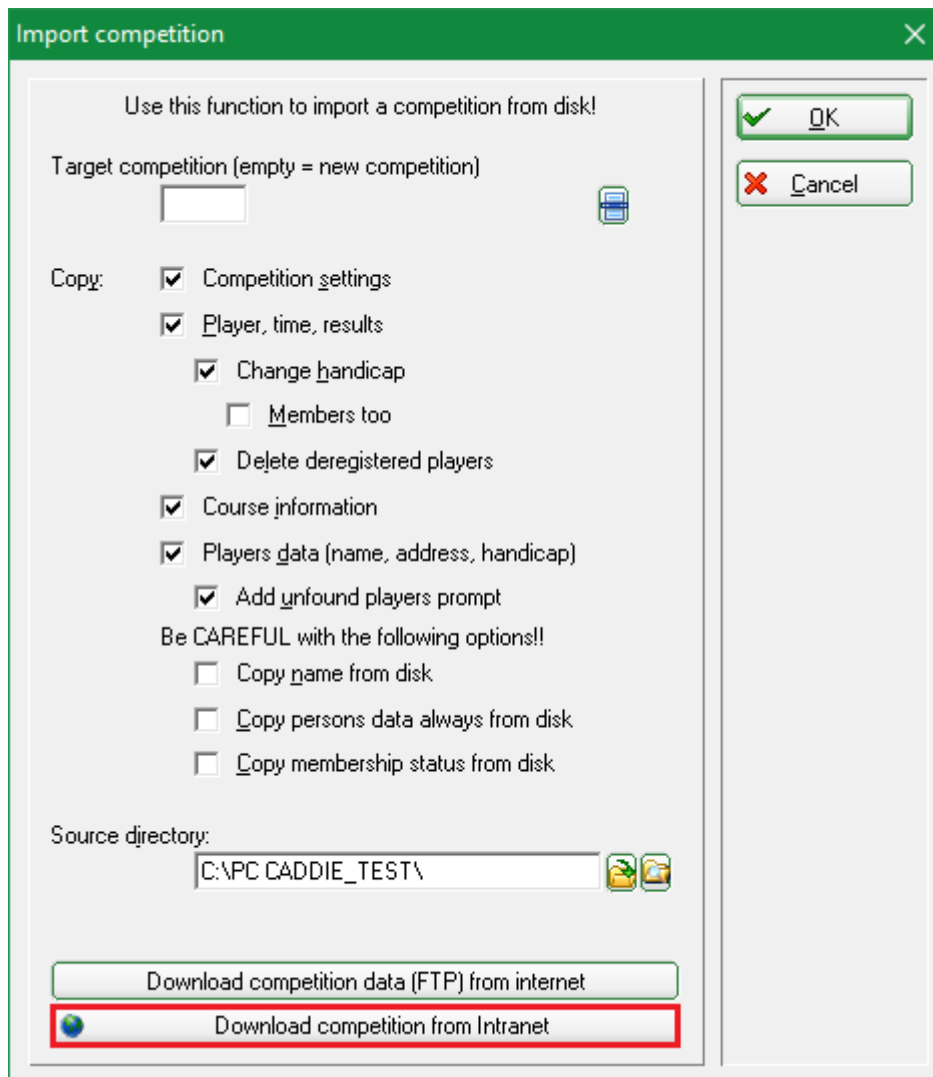
- In this case, the exporting club has a different club administration programme.
- There is no international interface, the function can only be used within Germany or Switzerland, i.e. both clubs, sender and recipient must be in the same country.
- It is particularly important that the exporting club also stores YOUR CLUB NUMBER in the tournament that is to be made available to you, the number of the club that is authorised to load the tournament from the intranet.
- If the club number is not stored, the tournament cannot be imported.
- It is also important that each new stand is then also transferred back to the intranet by the sender

(start list, result list, possible start list of the 2nd round etc...).

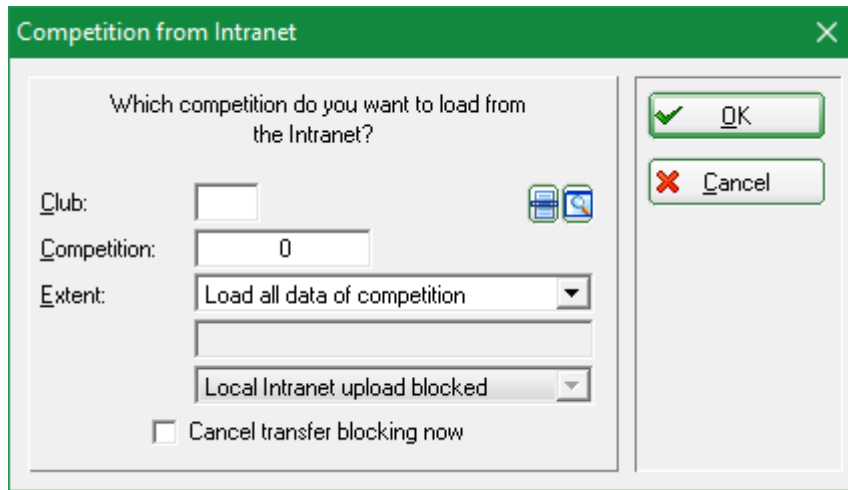
If you want to import a tournament that a club has uploaded to the INTRANET for you using other club management software to INTRANET for you, take the path via **Competitions/Import tournament** and click then click on **Load tournament via intranet**.



It continues at the bottom at **Load betting game via intranet**



In the following screen, you must enter the club number of the sender club and the tournament ID for the tournament, which you can only obtain from the sender club. A tournament ID has 12 digits and looks like this, for example: 490000353543 (49 is the country code for Germany)



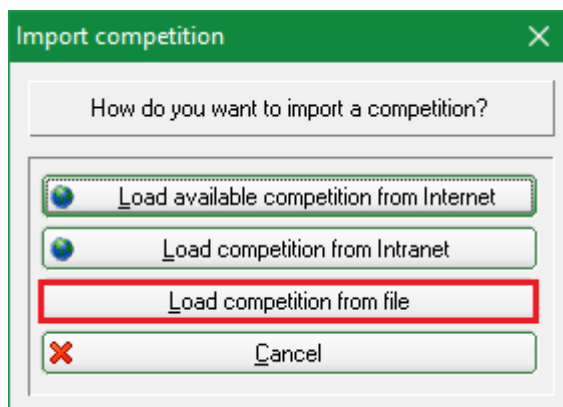
- As soon as the fields are filled in, click on **OK** and the tournament will be loaded.
- For tournaments from the intranet, the course data must also be loaded separately from the intranet and entered in the tournament: [Load course data](#)
- The sending club must have transferred both the start list and the results list to the intranet so that the files are also available for collection on the intranet.

You should also revise the settings for the prizes for tournaments loaded from the intranet: [Price evaluation](#)

Import from a file

Here you can only import tournament files that were previously created with PC CADDIE.

If, for various reasons, you cannot use the practical function **Tournament import from PC CADDIE server** and want to import a tournament file, click on **Competitions/Import tournament** and then select **Load tournament from file**. You can import the file e.g. from a USB stick or you have received the tournament file as an e-mail attachment. Save the e-mail attachment on your PC.



Pay attention to the following points:

1. If you select a tournament as the destination, this will be overwritten (CAUTION). If in doubt, leave the field empty and you will receive the imported tournament as a NEW tournament.
2. The checkmarks suggested in the image are correct by default for almost all cases.

3. Do not set no tick under „CAUTION“, if in doubt, ask PC CADDIE Support again. Do you have a current [Fast data backup](#) ?
4. Select the directory from which you want to import the tournament.

Import competition

Use this function to import a competition from disk!

Target competition (empty = new competition)

1

Copy:

- ☒ Competition settings
- ☒ Player, time, results
- ☒ Change handicap
- 2 ☐ Members too
- ☒ Delete deregistered players
- ☒ Course information
- ☒ Players data (name, address, handicap)
- ☒ Add unfound players prompt

3 Be CAREFUL with the following options!!

- ☐ Copy name from disk
- ☐ Copy persons data always from disk
- ☐ Copy membership status from disk

Source directory:

4

Click on the top right on **Read in**. You will then find the tournament in your tournament list.